

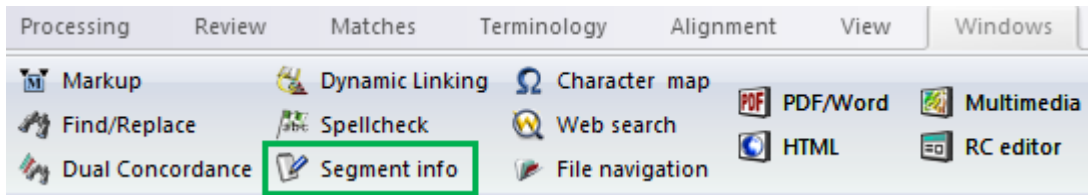


## POST WEBCHECK REVIEW

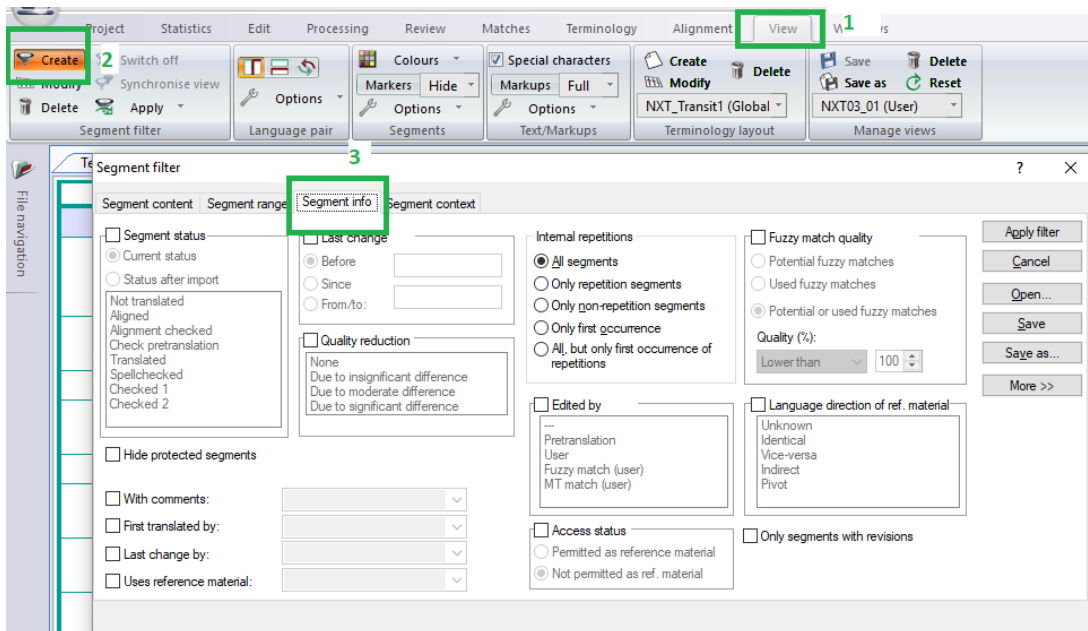
### *How to filter only Segments with Revisions / with Comments.*

\*\*\* You must have the language pairs open. \*\*\*

In Transit, the **Segment Info** panel displays the previous translation and tracks the changes made. To activate the panel, go to [Windows] > [Segment Info]

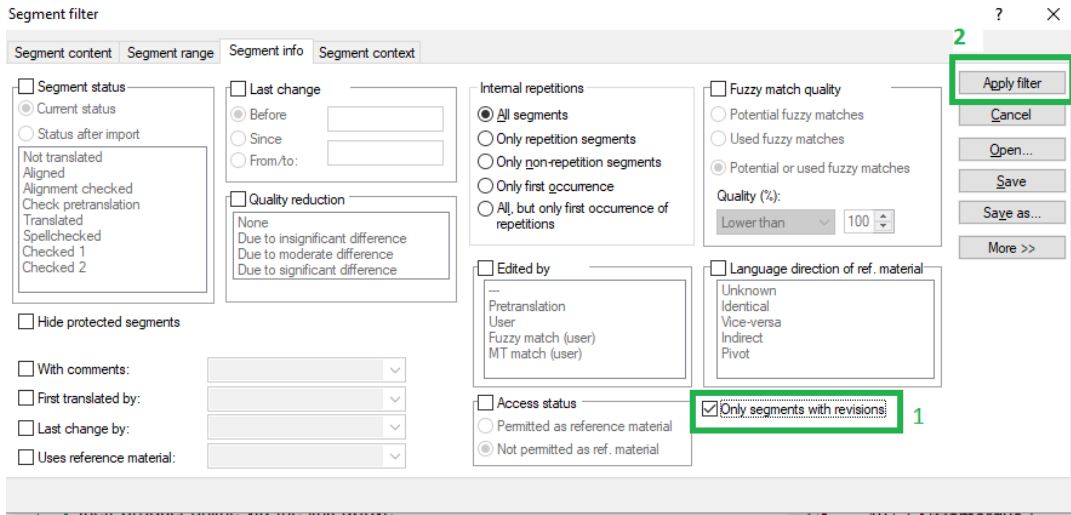


To display only reviewed segments go to: [View] > [Create] > [Segment filter] >





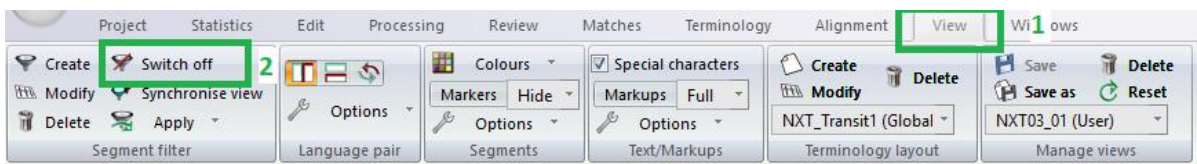
Tick only the option **“Only segments with revisions”**, click **“Apply filter”**.



Only segments reviewed by the customer are now displayed.

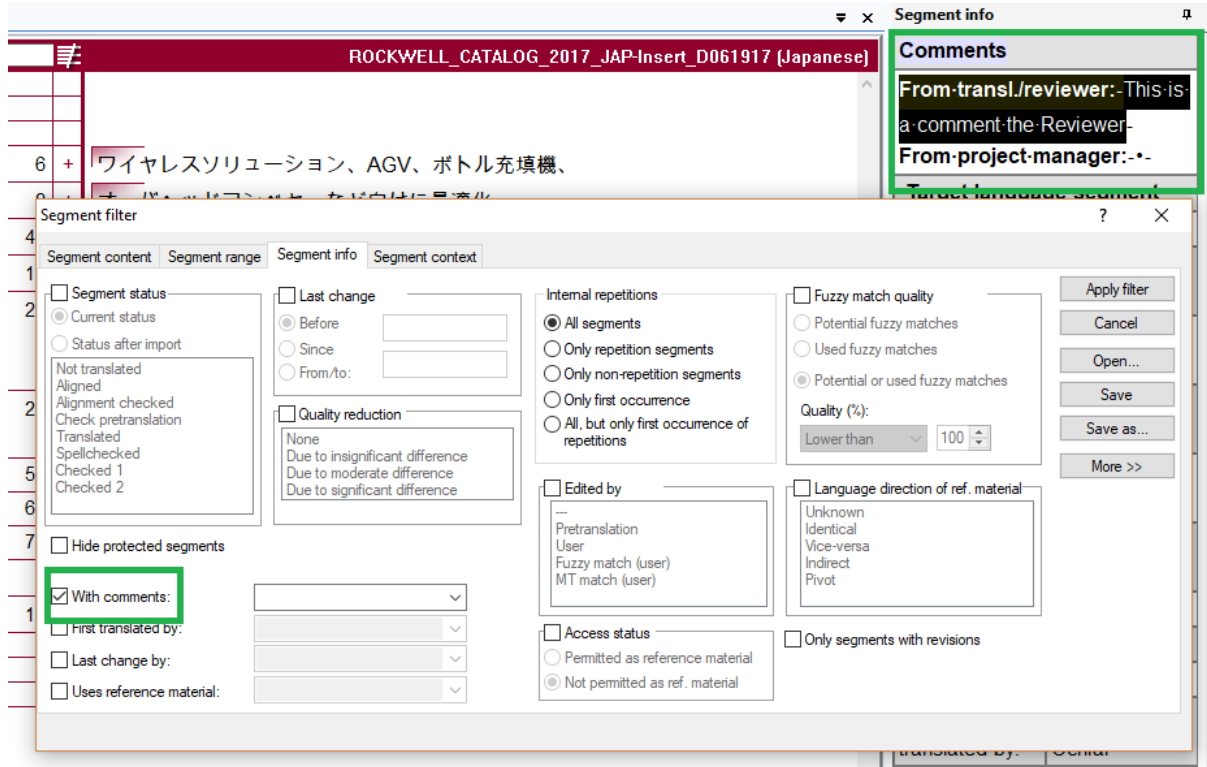


Click **“Switch off”**, to deactivate the filter.





Then, tick only “**With comments**” and check segments with comments, if any. Only commented segments are now displayed.



**IMPORTANT:** you must switch off the Filter to do Global Search and Replace.